



BELLE PLAINE NEWS & EVENTS

Fall 2018

Lakes gain ground in milfoil battle

Chemical treatment. Scuba divers hand-picking individual plants. Machine-aided harvest.

The ongoing battle to keep Eurasian Water Milfoil from clogging the Cloverleaf Lakes was fought on three fronts over the summer of 2018. Early indicators are positive for again knocking back the persistent invader.

"We won't get a final status report from our environmental team for a few weeks, but we're very encouraged by what we've heard so far," says **Christopher Sampson**, co-president of the Cloverleaf Lakes Protective Association.

"The process of applying herbicide in Round Lake went smoothly. Grass Lake had some milfoil colonies getting reestablished last year and this spring, but the divers feel like they got most of that. And Pine Lake didn't require any extra attention at all."

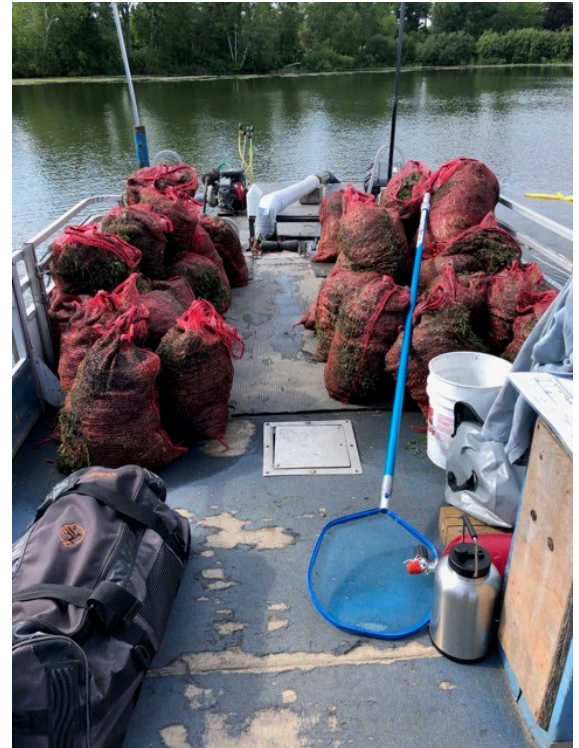
EWM was first discovered in the Cloverleafs nearly two decades ago. Periodic herbicide treatment and manual removal has been fairly effective in keeping ahead of the nuisance

weed, but hybridization has made control more difficult. Fast-growing EWM does not stop when it reaches the surface and in some lakes can form dense mats that impair boating and swimming, and crowd out native plants, fish and other species.

Before this summer, the last widespread application of herbicide on the Cloverleafs took place in 2016. Pine and Grass lakes were treated with the chemical fluridone, which kills Eurasian and hybrid milfoil but has little or no effect on native plants.

This year, technicians from Lake and Pond Solutions Co. spread fluridone pellets in 27-acre Round Lake on June 1, and followed that with a booster application in early August. The effectiveness of this year's treatment won't be fully known until next summer.

Meanwhile, specialists from Onterra – the environmental consulting firm that monitors the lakes for the CLPA and advises on milfoil-fighting strategies – continued to survey Grass Lake
Continued on page 3



Bags of hybrid Eurasian Water Milfoil are aligned on the deck of a pontoon boat, ready for disposal. DASH, LLC (Diver-Assisted Suction Harvesting) from Green Bay spent three days hand-pulling milfoil in Grass Lake this summer.

Inside this issue:

Town update	2
Fireworks group	3
Firefighters	4
Gibson Island	5
Watershed helper	6
CLPA members	7
Triathlon	8

15th annual Cloverfest run/walk set Oct. 14

Runners and walkers are invited to circle Cloverleaf Lake on Sunday, Oct. 14, for fun and prizes.

The 15th annual Cloverfest 3.5-mile Run/Walk begins at 10 a.m. at the site of the former Rustic Resort, W8466 Rustic Drive.

Awards will be given for top male and female finishers in age groups 40 and up, 16-39 and 15 and under.

Food, refreshments and raffles will be available

for all contestants after the race.

The event benefits the Belle Plaine Sportsman's Club and the Shawano County Humane Society.

Registrations and checks can be sent to the Sportsman's Club, N2689 Rustic Drive, Clintonville. Fees are \$20 for adults and \$10 for youths under age 18. Fees on the day of the event are \$25 for adults and \$15 for youths. Registrants will also receive T-shirts.

New fire truck, possible station addition in the works

By Alvin Bartz

The summer sure passed by quickly. We had another successful Shawano County Fair. Our town booth got the blue ribbon in town competition. Witt's Sausage Haus did very well in the sausage competition. Our Rural Firemen's stand, which we own, grossed about \$28,000. Profits will be shared with Belle Plaine and Pella EMS and the Shawano FFA Alumni.

We have completed most of our road maintenance for the year.

Our joint fire department is currently looking at acquiring a new unit for the 2019-20 budget years. We try to buy one new fire truck every five years.

The plan is to buy a smaller truck that will be able to reach hard-to-get places and for traffic accidents, which are a lot of our calls. A typical full-sized pumper costs about \$525,000. For this smaller unit we expect the winning bid to be about \$325,000. Belle Plaine's portion of the cost is about 10 percent of the total.

Our town fire truck, a 1999 model, is planned to be replaced in the next cycle, about five years from now.

We are looking at space needs for when we change trucks, as the newer ones are much larger. We are exploring adding an extra stall to our building as we lost storage space with adding various

Belle Plaine chairman's message

pieces of emergency equipment. There is a need for more space when our crew is on standby or putting on gear to respond to a fire call.

We plan on burning the brush at the compost site when we get a snowfall. Town worker **Dick Hesse** has been turning the piles of leaves and grass. It should be okay for mulch.

The Belle Plaine Community Center, N3002 State Highway 22, will be the local polling site for the fall election on **Tuesday, Nov. 6**. The polls will be open from 7 a.m. to 8 p.m. On the ballot will be governor, U.S. senator, U.S. representative, various state races and county elections including sheriff.



Belle Plaine town notebook

* The town's compost site will be open on Saturdays from 9 a.m. to 2 p.m. through the fall until mid-November. The site is on Range Line Road. Take Highway 22 to River Bend Road to Range Line. The site is on the east side of the road.

* All dogs in the town must be licensed and have proof of vaccination. Fees are \$5 for a neutered male or spayed female or \$10 for an unneutered male or unsprayed female. All checks should be payable to the Town of Belle Plaine and sent to the treasurer.

* Reservations are being taken for the Community Center

and the Round Lake Park picnic shelter. The facilities can be rented for \$50. See the town clerk for details.

* The Shawano Area Fire Department is seeking volunteer firefighters for its Shawano, Belle Plaine and Wescott stations. Stop at Auto Prep, 220 North Main St., next to the Shawano fire station, or see Lt. **Mark Retzlaff** for an application.

* Fall hours for the Collection and Recycling Center on Cloverleaf Lake Road are on Saturdays from 9 a.m. to 3 p.m.

People with large items such as furniture, TVs or building materials are encouraged to take the items to the Shawano City Landfill. There is a small fee. Hours are 7 a.m. to 3 p.m. Monday through Friday and 8 a.m. to noon Saturdays. The Belle Plaine Recycling Center does not accept those items.

Belle Plaine officials

Alvin Bartz, chairman

Harold Polzin, supervisor

Dennis Thornton, supervisor

Kristine Vomastic, clerk

Kay Kristof, treasurer

Newsletter editor: Dennis Thornton



Belle Plaine Community Center

N3002 St. Hwy. 22

Clintonville, WI 54929

(715) 524-2690

Town clerk's hours:

4 to 6 p.m. Monday; 8:30 to 11 a.m. Saturday or by appointment

Regular Town Board meetings:

Second Monday of each month, 7 p.m.

Committees:

Planning, Zoning, Gibson Island Stewardship

Population estimate: 1,855

Cloverleafs battle 'super weed'

Continued from Page 1

and Pine lakes for EWM over the summer.

Although Pine Lake has remained largely milfoil-free since 2016, Grass Lake was found to have a number of small colonies. They ranged from a few or single plants, to small clumps, to one or two larger patches up to 35 feet in diameter.

Much of the milfoil was on the deep side of the reed bed in Grass Lake, midway between the County Y boat landing and the Gibson Island channel. Other small stands were found along the lake's south and west shores.

Chemical treatment of Grass (90 acres) and Pine (217 acres) would have been overkill for a relatively limited infestation, as well as cost-prohibitive at perhaps \$30,000 or more. Instead, Onterra advised the CLPA to hire a professional crew to manually remove EWM that was starting to regain a toehold.

The CLPA contracted with the Green Bay company DASH LLC. Two divers worked the lake on July 26 and again Aug. 4, combining to hand-pick and bag about 250 pounds of plant material each day. They took the EWM to a Green Bay-area yard waste center for disposal.

On Aug. 8, they returned again to tackle the larger colonies, this time with a mechanical "DASH" unit on their pontoon boat. The DASH unit – diver-assisted suction harvesting – doesn't actually vacuum the lake bottom. The divers pull the plants just

as they would without the machine, but instead of taking time to bag the material themselves, underwater, they feed it into a wet-vac tube to send topside. Saving time because the EWM was more concentrated and they didn't need to surface as often, the crew took 1,000 pounds of plants on Aug. 8.

"In total, we removed 1,507 pounds of plants from Grass Lake," reported diver and manager **Alan Pahnke**. "We were able to hit all of the areas that Onterra listed on (their map), harvesting with either the DASH unit or by hand-picking on scuba."

The \$5,200 cost of this summer's underwater EWM harvesting will be partially covered by the three-year DNR grant administered by the Town of Belle Plaine in cooperation with the Cloverleaf Lakes Protective Association.

Competition for those grants is growing as more Wisconsin lakes struggle with invasives, and the emergence of herbicide-resistant strains is making chemical treatment more complicated and costly. CLPA leadership is building a reserve fund (through residents' donations) to shoulder most or all of the costs, if need be, for the next major battle.

"It's very difficult to totally eradicate it, but you do enjoy a little victory when you get ahead of it," Sampson says.

"What's that sports cliché ESPN uses to describe what it's like going up against a Michael Jordan or Aaron Rodgers? 'You can't stop him. You can only hope to contain him.' That's milfoil. There's a reason some people have called it 'the super weed,'" he said.

Fireworks group reactivated

By Steve Joosten

Cloverleaf Lake Fireworks Inc. has reorganized. New officers were elected on Aug. 30 and we thank the previous committee for a job well done in providing our community with a wonderful fireworks display for many years.

Our goal is to provide a professional yearly fireworks display on the Cloverleaf Lake Chain for the enjoyment of all the families and businesses who live and vacation in the area. Please consider donating to help reach this goal! With continued support, we hope to grow this into a 4th of July tradition that will entertain for years to come.

Check us out on Facebook at "Cloverleaf Lake Fireworks Inc." and our Gofundme.com page is "Cloverleaf Lakes Fireworks 2019."

We are a 501(C)(3) non-profit organization and your donations are tax-deductible.

Donations can be mailed direct to:

Cloverleaf Lake Fireworks Inc.

P.O. Box 275

Embarrass, WI 54933

Thank You for your Support

Glenn McMahon, President

Steve Joosten, Vice President



Shad Krueger displays a life jacket in front of a stand that was later set up at the Cloverleaf Lakes boat landing. As an Eagle Scout project in cooperation with the DNR, he set up a stand offering loaner life jackets to boaters who needed extras.

Trained and ready, Kristof joins fire department

By Joan Sousek

The Shawano Area Fire Department (SAFD), which serves the City of Shawano and towns of Belle Plaine, Richmond, Waukechon and Wescott, is often seeking new volunteer firefighters and last year, Belle Plaine native **Kasey Kristof** answered the call.

"My dad used to be on it, and it's something I always wanted to do," says the son of **Tom Kristof** and **Kay Kristof**, town treasurer, and grandson of the **Marcy** and the late **Ken Rosenow**, both active town residents throughout their lives.

The 2017 Shawano High graduate, whose day job is working for his uncle **Kraig Rosenow** at Rosenow Lake Aire Acres on Wisconsin Avenue, joins a department of volunteer, paid-per-call firefighters about 50 strong including eight others from Belle Plaine. They are **Mark Retzlaff** (lieutenant), **Cory Retzlaff**, **Cedric Pettis**, **Rick Dinse**, **Jerry Krueger**, **Nick Benzinger**, **Tommy Stueck** and **Terry Schwartz**.

Pettis and Dinse also are on the town's Emergency Medical Service team with **Cory Retzlaff** (director), **Jeff Kammerer**, **Jenni Monroe** and **Dan Wolf**.

Anyone age 18 or over with a good record and physically fit who is interested in serving can pick up an application at Shawano City Hall, 127 S. Sawyer St. or at the department offices, 220 N. Main St. (Auto Prep Center).

Fire department members carry pagers, Mark explains, and when there is an incident, everyone is paged and whoever can, heads to the station. On weekends, groups take turns doing on-call shifts from 6 p.m. Friday to 6 p.m. Saturday and 6 p.m. Saturday to 6 p.m. Sunday. Each group is on call about once a



Kasey Kristof of Belle Plaine has undergone training to become a firefighter for the Shawano Area Fire Department.

month.

Calls vary and often include not only fire alarms, but also car accidents.

"Sometimes there are three calls a day, and sometimes you can go a couple weeks without a call," Mark says.

Kasey, like other new recruits, started going on calls almost right away although he was with the department four months before they had enough people to fill a firefighter class for his official training.

The state does not mandate training, but the SAFD requires Firefighter Entry (60 hours of training) and Firefighter 1 (36 additional hours of training, followed by a state certification based on written and practical skills examinations).

Newbies can help on the scene, but they do not go into hazardous situations until completing Firefighter Entry.

"There's plenty of stuff to do even if you can't go into a house, like hooking up to hydrants and grabbing stuff for people," says Kasey who now has completed Firefighter 1 and is starting Firefighter 2.

Wisconsin technical colleges provide the state-funded training. Additional training covers more specific situations including hazardous materials, trench, swift water, ice rescue, etc., and training for drivers, water tenders, supervisors and more.

The department has stations in Shawano, Wescott and Belle Plaine (Station 3) which houses a fire engine, brush truck and a Can Am all-terrain rescue vehicle acquired in 2017. Plans to expand the town station are in the works. (See more in Town Chairman **Alvin Bartz's** Page 2 article).

Training is done at the Shawano station the second and last Thursdays of the month.

Mark notes, "The training is paid for and the gear is also provided, so it really doesn't cost anything for the firefighter."

Belle Plaine firefighters and Emergency Medical Technicians include:

Back row left to right- Jerry Krueger, Nick Benzinger, Terry Schwartz, Mark Retzlaff, Cedric Pettis, Cory Retzlaff, Dan Wolff, Jeff Kammerer, Jenni Monroe
Front row- Rick Dinse, Kasey Kristof, Tommy Steuck, Toni Dinse

Photo by Becca Retzlaff



Volunteers enhance Gibson Island's special allure

By Joy Krubsack

The care of Gibson Island (G.I.) seems to go unnoticed as it remains a beautiful, natural place year after year. I agree that it has become better and certainly more special with time. Volunteers need to know that G.I. is an enhanced place because of them and their dedication.

This year the projects have included the removal of bricks, the repair to the dock and signs, painting of the G.I. sign, keeping the paths open, and removal of garlic mustard, black locust, mullein, bamboo, oriental bittersweet and garbage.

Who are these volunteers? First, the G.I. Youth Stewards are nine students who have completed the training process and are working on the care of G.I. The students are **Jasmine Wilson, Jesse Wilson, Josh Wilson, Cody Carrico, Allison Smejkal, Brock Smejkal, Sami Smejkal, Morgan Jensema** and **Daniel Rohrer**. Morgan is recognized for the most time donated as she also cleaned up the bricks, mortar and fireplace area for us. Thank you to all these students who helped this year and hopefully for the next two to four years.

Adults have also volunteered to be species leaders who search for the invasives that are pushing out the natural plant forms of this area. **Molly Joosten** is working against dames rocket and oriental bittersweet, **Chris Cloerter** and **Connie Fruendt**—garlic mustard, **Denny Nodolf** and **Andy Hines**—black locust, **Steve Joosten** and **Dale Fruendt**—buckthorn and **Joy Krubsack**—mullein and giant knotweed/bamboo.

If you would be willing to be on the volunteer invasive species removal team, please send your email address to jkrubsack@hotmail.com. Your name will be added to the work group notification listing and if you can help at that time, terrific! For example, this summer we had a black locust work day arranged. Seven people worked together to treat and remove most of the invasive. Also the large seeding trees were girdled and hopefully will be dropped on the ice this winter. Then the seed pods will be burned to reduce the spread of the invasive species.



The overwhelming response from people is that they enjoy and respect the beauty of Gibson Island. However, sadly a few people decide to vandalize and litter. For example, no matter how many times a person vandalizes the "no dog" signs, the fact remains that the rule still applies. We simply request that they stop!



Gibson Island, in the top center, takes on a different look in this photo taken from a drone with a fish-eye lens. The angle is facing west from Pine Lake.

Photo by Christopher Cichy

This all takes time but G.I. is a better place because of the volunteers who help. AND spending time in a beautiful outdoor environment, with friendly people working to do a good thing is excellent for your soul.

Thank you to all those who have helped in small and large ways at Gibson Island! That includes those who enjoy your walks on the island and leave no evidence left behind that you were there to visit. You too are good stewards of Gibson Island! *Krubsack is Chair of the Gibson Island Stewardship Committee*



Watershed coordinator added to help area lakes

Emily Henrigillis is the Watershed Coordinator for Shawano and Menominee Counties. The newest member of the Fox-Wolf Watershed Alliance, she is working with the Waterways Association of Menominee and Shawano Counties (WAMSCO) to improve the watershed around the Wolf River. "I am unbelievably excited to be in this new role and cannot wait to start implementing projects," she said.

To date, Emily has attended meetings with the Cloverleaf Lakes Protective Association, Legend Lake P&R District, the White Clay Lake Sportsmen Club, and the Menominee Tribe. She has completed point-intercept surveys for Pensaukee Lakes, Big Lake, Peshtigo Lake, Moshawquit Lake, and Lulu Lake. She also completed the shoreline survey for Long Lake, as well as helped on Pensaukee Lakes and Peshtigo Lake. She has met with and garnered interest from at least one individual to complete a shoreline restoration project. She also is working with two lakes that are interested in implementing fish sticks.

She plans to meet with Matsche Farms as well as Jacobs Farms to discuss interest in agricultural best management practice implementation. She also hopes to work on a water quality project with the WDNR to understand the relationship between run-off and the mussels within the Wolf River.

Emily grew up in Minnesota where her love of marine biology led her to UW-Whitewater. After learning about the ecology of Wisconsin, she ended up with a bachelor's degree in Biology with an emphasis in Field Ecology. While there she worked on

two separate projects. The first was looking at the genetics of three-spine sticklebacks to see if females were starting to develop male traits or if this change was environmental. She also helped collect sturgeon tissue samples to be analyzed for heavy metals.

After graduating from UW-Whitewater, she moved to Green Bay to pursue her Master's in Environmental Science and Policy with an emphasis in Ecosystem Studies. Her thesis work was on changes in spider assemblages within Cedarburg Bog over a 20-year time period. While in graduate school, Emily started working with consulting firm Onterra as well as playing roller derby with Fox Cities Roller Derby.

Emily's work with the consulting firm took her to lakes throughout the state, from Walworth to Bayfield County. She has experience completing pre-treatment surveys, early season AIS surveys, point-intercept surveys, floating-leaf and emergent surveys, late-season AIS surveys, shoreline surveys, and water quality monitoring. She also has completed stakeholder surveys, worked with extensive data sets in excel and GIS, helped compile lake management plans, and assisted lake groups complete the WDNR Surface Water grant reimbursements.

In her personal life, she has a husband, a son, and two cats. She still enjoys helping out at roller derby and has plans to compete in a strong-man event in 2019. She is trained in the rare plant monitoring methods used by the WDNR. She has helped discover a new species of spider as well as a new mussel record for the state.

CLPA needs a board member

A newly appointed board of directors member of the Cloverleaf Lakes Protective Association has resigned and the board is seeking a volunteer to join the six other board members.

Chris Rudolph had been appointed after the May annual meeting. He had to withdraw, citing changed conditions in his job.

Board members attend monthly meetings to discuss lake issues and help with other duties ranging from water testing to bookkeeping. Any CLPA member interested in joining the board can contact co-presidents Chris Sampson or Jessica Meier. Their contact information is on page 7.

* The board is gathering information to update the lake management plan in coming months. The plan, which covers invasive species, water quality, shoreland and recreation, was created about 12 years ago by more than 30 local volunteers. Anyone interested in helping update the plan can contact board members.

* The board also received a demonstration in August of a high-tech boat cleaning device that could be placed at the boat landing on Highway Y. The device, made by a Minnesota company, included many tools including an air hose, suction device, brushes and a tongs to remove weeds from boats before they enter the lake.

Invasive species specialist **Brady Stockwell** researched the



The Cloverleaf Lakes Protective Association board of directors for 2018-19 includes, top from left, Chris Rudolph, Dick Thurow, Joe Mass and Kevin Goodman; bottom, Dave Rosenfeldt, Christopher Sampson and Jessica Meier. Rudolph has since left the board

device and found it would be a difficult fit at the boat landing and is expensive. The board will recommend a more low-tech solution, perhaps using grabbers and scrub brushes, until the Wisconsin DNR comes up with a recommendation for a more appropriate invasive species device.



Wisconsin's Recreation Center
The Place for Health, Rest & Pleasure
CLPA incorporated in 1936

P.O. Box 288
Embarrass, WI 54933-0288

"Preserving our lakes for future generations"

If you haven't paid your 2018 dues, please make your check for \$25 payable to Cloverleaf Lakes Protective Association, fill out and clip this form, and send it to CLPA, P.O. Box 288, Embarrass, WI 54933-0288. The membership is for the calendar year 2018. Please consider making a tax-deductible donation.

Name: _____

Lake Address: _____

Telephone: _____

E-Mail: _____

Home Address (if different): _____

Dues \$ 25.00
I would like to make a tax-deductible donation of \$ _____
TOTAL ENCLOSED \$ _____

Board of Directors

Jessica Meier, co-president and treasurer (715) 823-6604
JessicaMeier@UWalumni.com

Dick Thurow
(414) 430-9067

Christopher Sampson, co-president
csampson@new.rr.com

Kevin Goodman
Cloverleafprotective@gmail.com
(920) 830-2788

Joe Mass, vice president (715) 823-3758
jandsmass@gmail.com

Bike the Barn Quilts Sept. 29

A 20-mile route through the Town of Belle Plaine is among several routes available during the annual Bike the Barn Quilts event on Saturday, Sept. 29.

On the Belle Plaine ride (guided or solo) traveling south towards Cloverleaf Lakes you can see 20 barn quilts in 20 miles. The terrain is rolling. Use caution when riding on Highway 22. If you choose the guided ride, a knowledgeable guide will provide information on farm and quilt patterns at each of the stops. You'll have plenty of opportunities to take pictures. (2 food stations)

The Belle Plaine route starts at Memorial Park in Shawano and travels down Highway 22, then along Highway CC. It turns west on St. John's Church Road, then south on Town Line Road to Cloverleaf Lake Road. It follows Cloverleaf west to Highway 22, then north to Belle Plaine Avenue all the way back to Highway CC and

north to Shawano.

Individual fees are \$40 prior to race day, then \$45; or \$45 then \$50 for a guided tour. Groups of three or more pay \$37 prior to Sept. 29, then \$45.

A 5-kilometer run on the same day is free of charge.

Registration is from 7:30 to 8 a.m. for the 40- and 70-mile routes and 8 a.m. to 9 a.m. for the others.

Start time for the 40- and 70-mile routes is 8 a.m. and an opening ceremony is at 8:30 a.m. The shorter routes start at 9 a.m., followed by the guided tour route at 9:15 a.m. The 5K run/walk starts at 9:30 a.m. All events start at Memorial Park in Shawano.

Theda Care is sponsoring the event that is organized by Shawano Pathways bicycle club.

More information is available at www.shawanopathways.org

Lake shirt sale nets \$850

Molly and Steve Joosten have donated \$850 to the CLPA. Molly created and sold more than 140 lake-themed shirts during the summer through the lake association website and Facebook.

A portion of each sale was donated to the lake association to be used for milfoil control and other projects.

Look for a letter from the lake association later this year asking for 2019 memberships and donations, which are tax-deductible.

New memberships since the summer newsletter include **Steven and Kathleen McKay, Eugene and Helen Mehlberg, Dan Parr and Linda Altman.**

Belle Plaine Community Center
N3002 St. Hwy. 22
Clintonville, WI 54929

Cloverleaf Lakes Triathlon draws 150



About 150 athletes competed in the 11th Cloverleaf Lakes Triathlon on Sept. 2. Above, a Shawano County officer stops traffic while bicycle riders speed around the corner. Right, a couple of runners head down Cloverleaf Lake Road. The event features swimming, biking and running.



Belle Plaine calendar

Oct. 8: CLPA board, 9 a.m., Community Center
Oct. 8: Town Board, 7 p.m., Community Center
Oct. 14: Cloverfest Run/Walk, 10 a.m., Rustic Resort
Nov. 12: CLPA board, 9 a.m., Community Center
Nov. 12: Town Board, 7 p.m., Community Center
Dec. 10: CLPA board, 9 a.m., Community Center
Dec. 10: Town Board, 7 p.m., Community Center
Jan. 14: CLPA board, 9 a.m., Community Center
Jan. 14: Town Board, 7 p.m., Community Center