



BELLE PLAINE

NEWS & EVENTS

Spring 2019

Sign up for free well water tests

Free well water tests will be offered to Belle Plaine residents over Memorial Day weekend in May.

It's simple. Pick up a sample bottle, fill it with water from your well and return it to the Belle Plaine Community Center.

A pre-registration form can be found on the back page of this newsletter as well as on the websites for the town and the Cloverleaf Lakes Protective Association.

The project will be funded by the town and the Lumberjack Resource Conservation and Development Council that awarded a grant of \$2,780, which is 50 percent of the estimated cost of testing 100 wells.

Town officials will hand out bottles to collect well water samples to residents, then will take them to the Center for Watershed Science and Education at the University of Wisconsin-Stevens Point.

Here's the schedule:

Saturday, May 25: Pick up sample bottles between 9 and 11 a.m. at the Community Center, or from 11 to noon at the Round Lake Park picnic shelter following the CLPA annual meeting.

Monday, May 27: Take a fresh sample from your well and return it to Community Center between 9 a.m. and noon.

The Town Board has approved the program and budgeted the funds as a public service to town residents.

For the test, take the sample bottle, run some water from the faucet that leads directly from the well, sterilize the faucet using a flame, then fill the bottle on Monday morning. Return it to the Community Center by noon. Samples must be tested within 30

hours of filling the bottles.

The water will be tested in Stevens Point for coliform bacteria, nitrate, pH, alkalinity, total hardness, saturation index, conductivity and chloride.

The town has had some issues with its ground water supply. The Community Center has tested for an unacceptably high level of nitrates and must supply bottled water to guests at community events. There were also issues with some wells in the Round Lake area as well as individual wells throughout the town. Nitrates may harm pregnant women and young children.

Besides providing information to each homeowner, the Center will map well results throughout the town and provide a community education event about a month after the testing. Test results will be mailed to homeowners.



A grant from the Lumberjack Resource Conservation and Development Council will provide 50 percent of the funding for the Belle Plaine well water testing project. The Lumberjack Council has nine northern Wisconsin counties, including Shawano, as members and has a mission to encourage and fund conservation projects. Some of the projects include combating invasive species, building parks and community gardens, and providing signage on nature trails. It is based in Rhinelander.

Inside this issue:

Town update	2
CLPA annual	3
Shoreland beauty	4
Long Lake sale	5
Fireworks return	6
CLPA members	7
Well water testing	8

Busy summer ahead, mark your calendars

A pair of May events will kick off the summer season in Belle Plaine. The annual meeting of WAMSCO (Waterways Association of Menominee and Shawano Counties) is planned for Saturday, May 11, at 9 a.m. at the Belle Plaine Community Center. It is open to the public at no charge (Page 6 for details). And the Cloverleaf Lakes Protective Association will hold its annual meeting (page 3) on Saturday, May 25, at the Round Lake Park picnic shelter starting at 10 a.m.

The big news in the area will be the return of

fireworks over Cloverleaf Lakes on Saturday, July 6, starting at dusk. The Fireworks Association has reorganized and will present the first fireworks program since 2015 (details on page 6). The traditional CLPA Kiddie Parade is planned for 10 a.m. the same day starting at the boat launch on County Highway Y. A pontoon parade may be reinstated.

Later in the summer, the Cloverleaf Lakes Triathlon will bring dozens of runners and swimmers to the area for the event on Saturday, Aug. 31.

Will the snow-plowing season never end?

By Alvin Bartz

As I'm writing, on April 11, we're in the middle of our annual April storm. I called the Shawano County Highway Department, which plows the town's roads, at 5 a.m. to plan clean-up. The storm was supposed to be finished at 9 a.m., so I called our town's maintenance man **Dick Hesse** at 5 a.m. to coordinate his work with the county. As I'm writing at 11 a.m., it appears the storm will not be over soon.

February was an all-time high month for snow. We spent as much for plowing as we spend some years for the whole season. We don't budget a certain amount for snow. In a bad year, it just means there is less left over for blacktopping and other highway repairs.

We are moving along with plans to house an additional fire truck at the Community Center site to meet our residents' homeowner insurance requirements. After looking into several ideas, we plan to put an addition on our present storage shed for the equipment in there and move the fire trucks to that building. We

Belle Plaine chairman's message

will heat the present building, but not the addition.

We are having some issues on several roads where a contractor is hauling sand through our town on an almost daily basis. If we can't get the big trucks to stay on county and state roads, we will post those roads as Class B roads that they take to get to the town of Richmond. That will prevent damage to our town roads.

This year the county has posted spring weight limits on more roads than in the past, including County Y. The weight limits prevent damage to roads, softened in the springtime when the frost goes out. We have had numerous calls from contractors for almost every heavy load. I expect weight limits will go off in about two weeks.

A few years ago, I planted corn on April 17. It doesn't look like that will happen this year.

Belle Plaine town notebook

Residents will have an opportunity to review their property assessments at an Open Book session Sunday, April 28, from 12:15 to 2:15 p.m. at the Belle Plaine Community Center. Those wishing to contest the assessments can appear at the Board of Review on Tuesday, May 14, from 6 to 8 p.m.

*Tax collection: Second installment due July 31, 2019, to County Treasurer, **Debra Wallace**, 311 N. Main St., Shawano, WI 54166. If the first installment was not paid by Jan. 31, 2019, the entire tax is due to the Shawano County treasurer. Please read the back side of your green property tax bill for the consequences of failing to pay in a timely way.

* All dogs in the town must be licensed and have proof of vaccination. Fees are \$5 for a neutered male or spayed female or \$10 for an unneutered male or unsprayed female. All checks

should be payable to the Town of Belle Plaine and sent to the treasurer, **Kay Krisfof**, N2940 Spruce Road, Clintonville, WI 54929.

* The Shawano Area Fire Department is seeking volunteer firefighters for its Shawano, Belle Plaine and Wescott stations. Stop at Auto Prep, 220 North Main St., next to the Shawano fire station, or see Lt. **Mark Retzlaff** for an application.

*The town's compost site on Range Line Road is open for the summer. Hours are from 9 a.m. to 2 p.m. on Saturdays.

*Hours for the Collection and Recycling Center on Cloverleaf Lake Road are Saturdays from 9 a.m. to 3 p.m.

People with large items such as furniture, TVs or building materials are encouraged to take the items to the Shawano City Landfill. There is a small fee. Hours are 7 a.m. to 3 p.m. Monday through Friday and 8 a.m. to noon Saturdays. The Belle Plaine Recycling Center does not accept those items.

Belle Plaine officials

Alvin Bartz, chairman

Harold Polzin, supervisor

Dennis Thornton, supervisor

Kristine Vomastic, clerk

Kay Kristof, treasurer

Newsletter editor: Dennis Thornton



Belle Plaine Community Center
N3002 St. Hwy. 22
Clintonville, WI 54929
(715) 524-2690

Town clerk's hours: 4 to 6 p.m. Monday; 8:30 to 11 a.m. Saturday or by appointment

Treasurer's hours: every Wednesday 8:30 to 10 a.m. and second Mondays from 4:30 to 7 p.m..

Regular Town Board meetings:

Second Monday of each month, 7 p.m.

Committees:

Planning, Zoning, Gibson Island Stewardship

Population estimate: 1,855

Milfoil battle heads topics for CLPA annual meeting

By Christopher Sampson

Residents and friends of the Cloverleaf Lakes will hear updates on water quality and habitat, plans to reinvigorate Fourth of July week festivities, the drafting of a new lake management plan, and options for continuing the fight against aquatic invasive species during the annual meeting of the Cloverleaf Lakes Protective Association on Saturday, May 25.

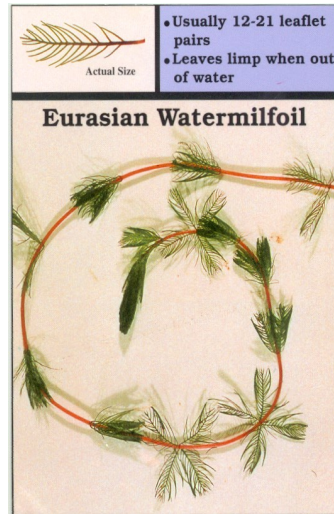
The meeting is set for 10 a.m. at the Round Lake Park picnic shelter, rain or shine.

All are welcome to attend and join in discussion. Eligibility to vote on policy matters and budget items is limited to those with current CLPA membership. More than 200 households, individuals and businesses had paid dues and renewed for 2019 as of early March.

Board Co-President **Jessica Meier** and I will solicit input at the meeting on a new strategy for keeping ahead of Eurasian water milfoil.

The board's environmental consultant, Onterra LLC, has suggested the Cloverleafs could benefit from an intensive round of manual harvesting.

The Town of Belle Plaine would put up the front money of \$10,000 to \$20,000 for a week or more of scuba diver work this summer. A DNR grant would reimburse 75 percent of that



CLPA co-president's message

amount later. The CLPA has an anti-milfoil "war chest" – amassed over the years through member dues and donations – that would help pay for Belle Plaine's 25 percent share of the total cost.

Grass Lake would be the focus. EWM colonies there are re-establishing at a more rapid rate than in Pine Lake, where last fall's Onterra survey found only a few scattered plants and stands.

Milfoil density in both lakes dropped near zero immediately following herbicide treatments in 2016. Round Lake, treated in 2018, will be assessed in early June.

Last summer, the CLPA contracted with a Green Bay-based dive company for several days of spot removal on Grass Lake, but by fall it was clear the scope of that effort was insufficient. It is hoped that a large-scale invasives removal project this summer might buy the Cloverleafs additional time before another round of even more expensive herbicide treatments is necessary.

Other topics at the May 25 Cloverleafs meeting will include plans by the Association to bring back the annual Pontoon Parade and by a group to bring back the fireworks display (see page 6); an outline of the process and volunteer opportunities involved in creating a new Lakes Management Plan as required by the DNR; and the election of new board members. Volunteers and nominations are welcome.

The Cloverleaf Lakes Protective Association is one of the oldest and most active lake organizations of its kind in Wisconsin. The CLPA has been holding member meetings most years since its founding in 1936.

Town officials re-elected

The three members of the Belle Plaine Town Board were re-elected in the April 2 spring election.

Chairman **Alvin Bartz** received 337 votes, with write-in candidate **Curt Korth** getting 130 votes. For Supervisor 1, incumbent **Harold Polzin** received 275 votes to beat challenger **Aaron Retzlaff's** 219. And for Supervisor 2, incumbent **Dennis Thornton** ran unopposed, receiving 437 votes.

Unopposed incumbent **Bob Holzbach** got 177 votes for a six-year term on the Cloverleaf Lakes Sanitary District board.

In Shawano, three seats on the school board went to **Diane Hoffman** (incumbent) with 2,168 votes, **Chris Gull** with 1,592 and **Mart Grams** with 1,432. Incumbent **Starlyn Rose Tourtilott** finished fourth with 1,336 votes.

In Clintonville, incumbents **Lori Jean Poppe** and **Mark Zachow** were re-elected, with challenger **Patrick Danforth** finishing third.



Christmas on the deck? Nope. A nasty mix of snow, wind, rain and even thundersnow hit Belle Plaine on April 11.

Native plants add beauty, prevent runoff into lakes

By Emily Henrigillis

Have you ever been frustrated with the presence of geese on your lawn? Has the presence of algae in front of your waterfront property caused you to not enjoy being at the cabin? Do you have a mosquito problem? Have you ever thought, how can I fix these problems?

The addition of a shoreland restoration project may be the solution to your waterfront problems.

A shoreland restoration project is the installation of a practice, usually native plantings, that restores a healthy transition from land to water. The goal of these types of projects is to help reduce runoff and erosion along the shoreline. The other benefits are fewer geese accessing your property, improved water quality in front of your cabin, and fewer mosquitos.

There are a few different options for shoreland restoration projects. There is also funding available to cover a portion of the costs of these projects.

The most common shoreland restoration project is reestablishing native plants within the riparian zone of your waterfront property. The riparian zone starts at the ordinary high-water mark and extends 35 feet inland. These projects should be a minimum of 350 contiguous square feet to be eligible for funding. The native plants used are made up of wild flowers, sedges and grasses. If done correctly, these projects will bloom continuously throughout the summer. Shrubs and trees are also a welcome addition.

Examples of these types of projects can be found throughout



One of the many shoreland restoration projects is at Letvens' on Cloverleaf Lakes that includes wildflowers and native plants.

Belle Plaine as well as Shawano County. The Cloverleaf Lakes, Long Lake, Glas Coffeehouse in Shawano and Shawano Lake all contain great examples of these types of projects.

The flowering plants usually used in native plantings along the riparian zone are great deterrents for geese. Geese will not cross through plants taller than they are because they are unable to see predators. Geese are attracted to manicured lawns because they can see predators' approach from all angles.

Rain gardens are another great option, if a complete restoration of your shoreland is not for you. A rain garden is a landscaped area with native vegetation and wild flowers that soak up rain water. These gardens are usually placed near a home or other building to help capture the water coming off the roof or other impervious surface. These projects help catch polluted water that would otherwise cause runoff concerns, such as algae. They are built to avoid standing water, so mosquitos are not a problem.

Funding for these projects is available. Shawano County Land Conservation Department is willing to fund up to 50 percent of shoreland restoration projects if the project follows the county's guidelines. There is also funding available through the Wisconsin DNR through the Healthy Lakes Grants initiative. These funds cover up to 75 percent of projects that meet the WDNR guidelines. More information can be found here: healthylakeswi.com/.

Funding can aid in the costs for a consultant to help create your project as well as the cost of materials.

For more information, contact the Cloverleaf Lakes Protective Association, Connecting Our Waters (emily@fwwa.org), your county conservationist, UW-Extension, or the WDNR. All these partners can help you complete a restoration project. Emily Henrigillis is the Shawano-Menominee watershed coordinator for WAMSCO.



Don Sorenson planted this rain garden on Grass Lake that uses runoff water from the roof to water the native plants.

For sale: Three large lots on Grass Lake Road

Three large lots just north of Long Lake will go on the auction block in May. The Cloverleaf Lakes Sanitary District obtained the 20-acre property from Shawano County when it was forfeited by unpaid taxes.

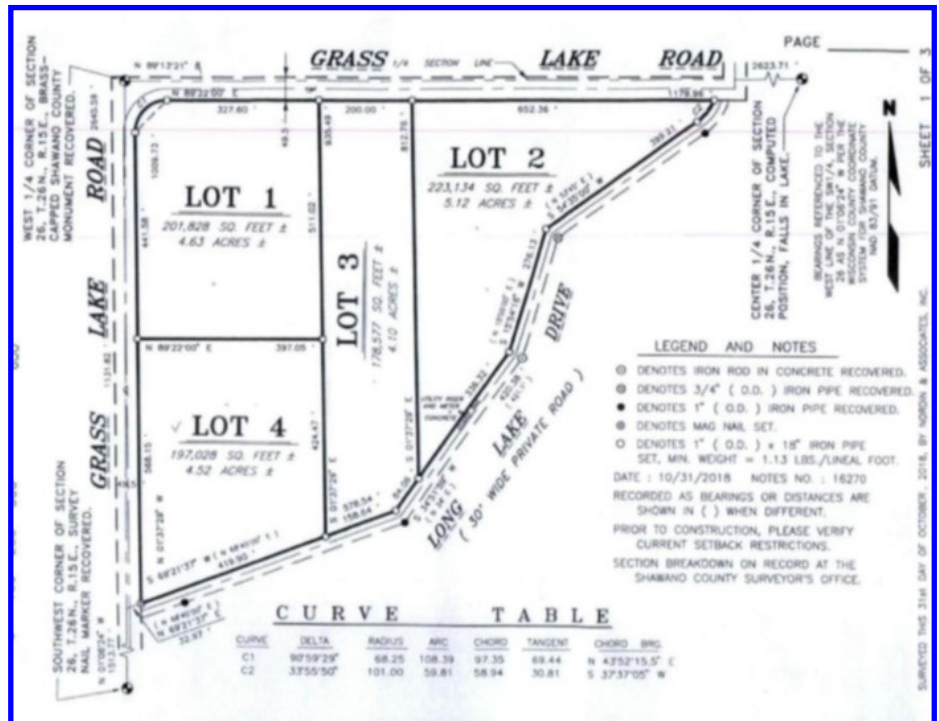
O'Connor Auction Group, based in Clintonville, will conduct the online auction starting May 1. The auction will conclude May 22 at 6 p.m.

Preview dates for viewing the property are Saturday, May 11, from 1 to 3 p.m. and Monday, May 20, from 4:30 to 6 p.m.

Lots are located north of Long Lake bordering Grass Lake Road on the north and west, with private road Long Lake Drive on the south. The lots on auction consist of lots 2, 3 and 4. Lot 1 is deeded to the town and will not be included.

Lot 2 is approximately 5.12 acres; Lot 3 is approximately 4.1 acres and Lot 4 is approximately 4.52 acres, all with access off Grass Lake Road.

See auction terms and bid at www.OconnorAuctionGroup.com or on its mobile app.



A map shows the lots northwest of Long Lake for sale by the Sanitary District.

Long Lake area once was Fernwood

In the early 1900s, surveys of the Long Lake area in the Town of Belle Plaine refer to the first platted areas as "Fernwood."

Beautiful Long Lake is a private, 86 acre lake, the source of which is comprised of fresh water springs, an inlet creek and runoff from area properties. The first landowners were farmers. In the 1920s smaller plats around the lake were sectioned off from these farmlands to create the Fernwood area lots. Small cottages were built around the lake.

An article in 1928 by **Verl Wolf** mentions "a new rural electric line will be constructed...that will serve four customers and feed the new Lion's Club House on Long Lake." Another article from 1932 states, "Now boys, speed up your cars and get ready for a swell ride." They were re-grading Long Lake Drive.

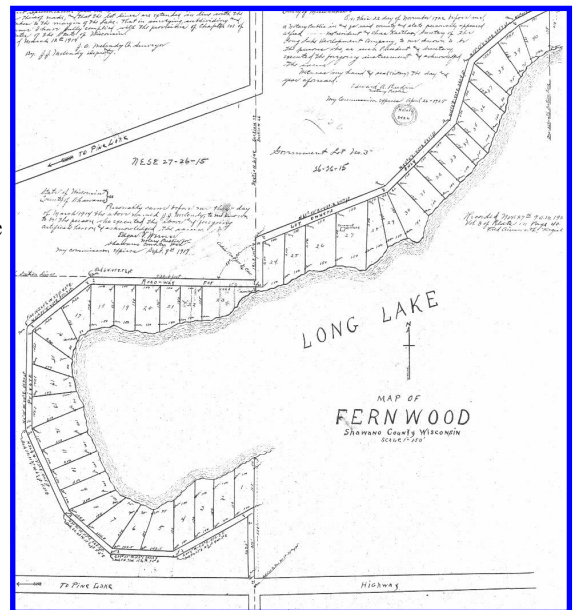
The first Long Lake School was erected in 1889. After a fire destroyed the building, the school was rebuilt in 1917. This one-room school served one to 35 students and was built with a brick exterior and tile flooring. The school (located on Schoenrock Lake Road) was closed in 1945.

In 1949 Imago Dei Village started camping programs on Long Lake. Many improvements over the years added a retreat center, winter activities and a commercial kitchen. Weddings are sometimes held on the pretty lakeshore area within the camp.

If you take a short drive east on Cloverleaf Lake Road and turn left on Grass Lake Road, the first property on the right is the camp, currently called Crossways Camping Ministries.

During the next few weeks, O'Connor will conduct an online auction of three properties that lie directly across a private road from the original Fernwood area.

Information, dates and historical references were taken directly from the book *Treasures in Time, The Town of Belle Plaine Sesquicentennial*, published in 2008 by the Shawano County Historical Society.



An early map shows Fernwood, the Long Lake area.

Fireworks group revives, plans July 6 lakes show

By Steve Joosten

Starting in 1995, the Cloverleaf Lakes put on a fireworks display as part of its Fourth of July celebration. A group of local citizens formed the Cloverleaf Lakes Fireworks Association and relied on private donations and fund raising to raise the money to put on the display.

In those early years the fireworks were shot from land over Pine Lake. In 2001, the fireworks display was moved to be shot from a barge anchored in Pine Lake for better viewing.

The Fireworks display was suspended after July 2015 and the Cloverleaf Lakes Fireworks Association disbanded.

We have reorganized and have a date set for the return of the Cloverleaf Lakes fireworks, which will be held on Saturday, July 6. So mark your calendars and tell your friends and family.

We would like to thank all the people who have made the commitment to support the return of Cloverleaf Lakes fireworks. We need everyone's support to keep this wonderful tradition alive for many years to come.



We will contract with Spielbauer fireworks, which will employ **Mike Nelson** and his team to launch the fireworks show from a barge anchored in Pine Lake. Please consider donating today. Your donation can be mailed to: Cloverleaf Lakes Fireworks Inc., P.O. Box 275, Embarrass, WI 54933.

We have a gofundme page at "Cloverleaf Lakes Fireworks 2019" and our Facebook page name is "Cloverleaf Lakes Fireworks Inc."

Please share this information with your friends, family and neighbors. Advertising opportunities are available for businesses. If interested, please contact one of the fireworks representatives.

Any questions can be emailed to pmcmahon23@gmail.com or call (920) 246-2678.

WAMSCO to meet in Belle Plaine

By Shanda Hubertus

WAMSCO, the group that represents Shawano area lakes and streams, will hold its annual spring meeting at the Belle Plaine Community Center on Saturday, May 11.

We will have a variety of speakers with topics to include: WAMSCO projects, shoreline restoration, native plantings, and holistic approach to lake and water quality. It will be held from 9 a.m. to noon. All are welcome.

The Cloverleaf Lakes Protective Association, Long Lake Association and Belle Plaine Sportsman's Club are all members of the Waterways Association of Menominee and Shawano Counties (WAMSCO).

WAMSCO has been expanding over the past few years and continues to look for more community projects and educational opportunities. The organization has assisted with shoreline restoration projects in Shawano County, field trips and many educational presentations.

We are excited to announce our first youth summer school program this year with the Wittenberg/Birnamwood schools. WAMSCO will use this program to educate our youth on the cycle of water, water quality and water conser-

vation. Our goal is to expand this program in future years to reach many other youths in Shawano and Menominee counties.

Please reach out to us if you are interested in having a youth program initiated in your school or organization.

Through our partnership with Fox Wolf Watershed Alliance, Connecting Our Waters was formed and we were able to hire a watershed coordinator for our two-county area.

Emily Henrigillis has office hours at the Belle Plaine Community Center on Tuesdays from 10 a.m. to 2 p.m. or by appointment.

Any suggestions or questions can be sent to WAMSCO@gmail.com. We invite you to visit our website regularly at WAMSCO.org for upcoming events, helpful links and resource material, and our fish forecasting app.

Hubertus is WAMSCO's president.



Belle Plaine calendar

May 11: WAMSCO annual meeting, 9 a.m., Community Center

May 13: CLPA board, 9 a.m., Community Center

May 13: Town Board, 7 p.m., Community Center

May 25: CLPA annual meeting, 10 a.m., Round Lake Park picnic shelter

May 27: Turn in well water samples, 9 a.m. to noon, Community Center

June 10: CLPA board, 9 a.m., Community Center

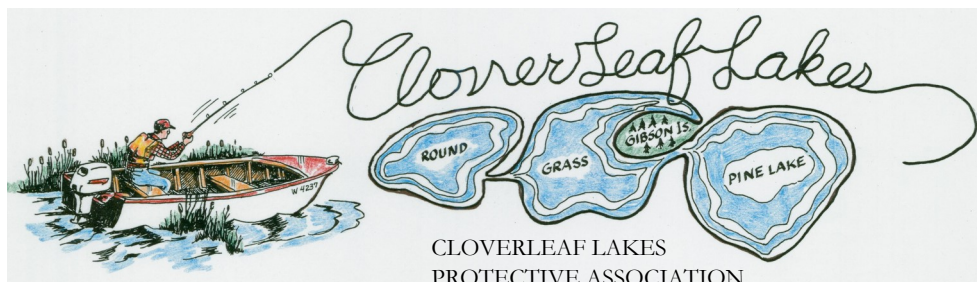
June 10: Town Board, 7 p.m., Community Center

July 6: Kiddie Parade, 10 a.m., start at Boat Landing

July 6: Cloverleaf Lakes fireworks, dusk, Pine Lake

July 8: CLPA board, 9 a.m., Community Center

July 8: Town Board, 7 p.m., Community Center



Wisconsin's Recreation Center
The Place for Health, Rest & Pleasure
CLPA incorporated in 1936

CLOVERLEAF LAKES
PROTECTIVE ASSOCIATION
P.O. Box 288
Embarrass, WI 54933-0288

"Preserving our lakes for future generations"

If you haven't paid your 2019 dues, please make your check for \$25 payable to Cloverleaf Lakes Protective Association, fill out and clip this form, and send it to CLPA, P.O. Box 288, Embarrass, WI 54933-0288. The membership is for the calendar year 2019. Please consider making a tax-deductible donation.

Name: _____

Lake Address: _____

Telephone: _____

E-Mail: _____

Home Address (if different): _____

Dues \$ 25.00
I would like to make a tax-deductible donation of \$ _____
TOTAL ENCLOSED \$ _____

Board of Directors

Jessica Meier, co-president and treasurer JessicaMeier@UWalumni.com	Gary Schumacher, Secretary Gary@Garyschumacher.com
Christopher Sampson, co-president csampson@new.rr.com	Dave Rosenfeldt (715) 823-6604
Joe Mass, vice president (715) 823-3758 jandsmass@gmail.com	Kevin Goodman Cloverleafprotective@gmail.com (920) 830-2788

CLPA members and donors for 2019

Cloverleaf Lakes Protective Association dues-paying members and donors for 2019, who paid from Jan. 15 to April 1. (Other memberships and donations were listed in the Winter newsletter.) There were 208 members and \$12,875 in donations as of April 1. THANK YOU!

Donations plus memberships:

\$500

Hayney, Richard and Mary
Johnson, Allen

\$300

Anonymous

\$250

Kopischke, Michael and Paula
Thornton, Dennis and Jan

\$100

Boegh, Steve and Darlene
Eggert, Rande and Patsy
Hosking, Barry and Linda

Kisser, Craig and Julie
Koontz, Kevin and Debbie
Letven, Marv and Esther and Todd

Mares, James and Susan
Ort, Gerald
Raymond, Mark and Kim
Steinke, Joe and Julie
Stueck, Tommy Jr. and Denise
Wait, Claude and Jessica

\$50

Anderson, Margie
Buth, Robert and Buth Family
Lake House
Gonnering, Ethel
Ort, James, Carlene and Jeffrey
Rosenfeldt, Dave and Sandy
Russell, Patricia
Smith, James and Dorothea
Speckhard, Steve
Timmer, Roger and Cheryl

\$25

Hawley, Bob and Nancy
Marotz, Mark and Rainee Bred-

da
McMahon, Glenn and Peggy
Schauder, Steve

Memberships (\$25)

Aumann, Janna
Born, John and Mary
Clark, Angela
Coney, Elizabeth
Dilley, Sondra
Dohr, Dan and Donna
Eisel, Michael and Laura
Engstrom, Martin
Fischer, Shirley
Gossen, Derrick and Krystal
Johnson, John and Jennie
Krause, Andy and Kathy

Krubsack, David and Karen
Lillge, Craig and Sara
Novak, DuWayne and Kathy
Nyvall-Buth, Murna
Pahl, Cara
Pearson, T. Allan and Betty
Riehl, Keith and Kris
Robley, Dave and Linda
Rogney, Roger and Pat
Ruppert, Dean and Jean
Schabo, Arlene
Schertz, Gerri
Sievert, Vervyle and Virgie
Smejkal, Benjamin and Leah
Surber, Jerome
Swietlik, Sandra
Wanezck, Warren

Check for lake/town news at
www.CloverleafLakes.com and
www.BellePlaineWI.com

Belle Plaine Community Center
N3002 St. Hwy. 22
Clintonville, WI 54929

FREE well water test for town residences — Fill out and send in

Pre-registration information:

Name_____

Well address_____

City, zip code_____

Phone_____

Email_____

Home address to send results (if different)

Street_____

City, state, zip_____

Please send completed pre-registration form (left) to
Town Clerk Kris Vomastic
N3002 State Highway 22
Clintonville, WI 54929
by May 15
OR drop off Saturdays 8:30 to 11 a.m., or Mondays
4 to 6 p.m.

Distribution: Sample bottles can be picked up at the
Community Center Saturday, May 25 9 to 11 a.m.
Or Round Lake Park shelter, May 25, 11 to noon

Collection: Sample bottles MUST be taken Monday
morning, May 27, and returned to the Community
Center from 9 a.m. to noon
(Check one below)

I will pick up sample bottle at Community Center
I will pick up sample bottle at Round Lake Park

Homeowner Package (free to Belle Plaine residences) Coliform bacteria, nitrate, pH, alkalinity, total hardness, saturation index, conductivity and chloride. This is the basic package recommended for all private well owners.