



# BELLE PLAINE

---

## NEWS & EVENTS

Summer 2023

### CHAIRMAN'S MESSAGE *By Alvin Bartz*

**W**e are well on our way with our road work. Dick is well on his way with mowing. Our goal is to be done by the 4th of July. Blacktop to mill and repave will be on Maple Leaf from 22 north to Valley Lane and a section on Range Line, about one mile. Black top cost is about \$200,000 to mill, repave, shoulder and minor culvert work. We should be doing 2-3 miles to keep roads in good repair for the traffic volume and the weights of trucks. We will also put a double chip on Schoenrock Rd. at a cost of \$43,000.00. To blacktop that section would be over \$100,000.00. We will also be doing about \$25,000.00 worth of crack filling and about a mile of chip sealing. In the fall we will be back to limbing trees that have overgrown the roadways.

We will be required to do a reassessment of property values in the next budget year, when assessments are more than 10% less than fair market value for a number of years the state requires it. Fair market value is based on sales. We expect the cost to be about 60 to 70 thousand.

Inflation has risen well beyond the revenue available to the town. Shared revenues, now called CMA, was cut in 2004, 2010 and 2012 by the state. We will receive an increase for the first time this year but still not to the level of 20 years ago. Levy Limits has limited the town to increase revenue by a few thousand dollars while costs have doubled. We can no longer afford to have free garbage. If a provision in the state budget passes, we will be able to take that cost out of our budget without having to reduce our local levy. We are only one of two towns in the county that do not charge residents for garbage. Levy limits have made it impossible for the tax roll to catch up with inflation. Other towns have turned less traveled roads back to gravel as a cost saving measure. The cost of labor, fuel and equipment make it unlikely the cost of road work will be down.

We have had reports of bears across the town, some coming to bird feeder's mid-afternoon, we have 8 different ones on a camera in our woods. Have a safe summer.



### INSIDE THIS ISSUE

<b>Town Messages</b>	<b>2</b>
<b>Recycling</b>	<b>3</b>
<b>Belle Plaine Officials</b>	<b>3</b>
<b>Beaver Dam Removals</b>	<b>4</b>
<b>Sportsmans Club</b>	<b>6</b>
<b>4-H Information</b>	<b>6</b>
<b>Gibson Island Thanks You</b>	<b>6</b>
<b>Fireworks Update</b>	<b>7</b>
<b>Wolf River Lutheran HS</b>	<b>8</b>



# MESSAGES FROM THE TOWN OF BELLE PLAINE

## CLERK'S MESSAGE *by Kristine Vomastic*

In 2021 we passed an ordinance that requires a permit to put up a fence. A copy of this and other ordinances is on our website under Documents and Links.

Under Services on our website is information on garbage, recycling the compost site and other local information.

Upcoming meetings are located under Calendar of Events.

Under Town Information you can find Licenses and Fee Information, Tax Information, Elections and Meeting Minutes.

Board member contact information, office hours and Community Center address can be found under Contact Us.

To get to our website type in [www.belleplainewi.com](http://www.belleplainewi.com)

We will be having four elections next year leading up to the Presidential election in November 2024. If you are interested in becoming an election worker, please contact me at 715 524 2690.

Enjoy your summer!

## SUPERVISOR NUMBER 1 *By Wade Wisniewski*

Insight into the town board, we are people just like you and we are willing to help. We do not, however, have all the answers and if we do have an answer, it may not be what you want to hear. We are doing our best with ever changing challenges which are mostly disputes between neighbors.

I would like to thank everyone involved with the beaver dam project for coming together as a community to solve one of the problems that contributed to the high-water levels on the lakes.

Thank you to Cory Retzlaff for his service as Supervisor #2. We welcome Cody Hoffman as our new Supervisor.

We are still trying to figure out what to do with the Recycling Center Situation.

## SUPERVISOR NUMBER 2 *By Cody J. Hoffman*

Just like that summer is underway and I am three months and a few Town Board meetings into my new role as supervisor. I want to say thank you to the people who have worked with me to get me up to speed, there is quite a learning curve. As much as it is a pleasure for me to lead our town, I also find great satisfaction in being educated as we move forward.

I personally don't have any updates I want to share in this letter but as always feel free to contact me with any questions or concerns.

Thank you to all, Enjoy the rest of your summer.

## TOPICS FROM THE TREASURER *by Colleen Weishoff*

### PROPERTY TAXES

Earlier this year we finished tax collection for the 2022 tax year. This year we resumed in-person tax payment collection at the town hall. There were two collection dates, one at the end of December and the other at the end of January. The overall response to the in-person collection days has been very positive and we plan to do the same for the 2023 tax season. Any comments or suggestions to improve the process are welcome.

If you paid your 2022 taxes using the installment plan the second payment is due by 7/31/2023. That payment should be made to:

Shawano County Treasurer  
311 N Main St.  
Shawano, WI 54166

### DOG LICENSING

This past February an email regarding dog licensing was received from the Shawano County Clerk. The email states in very large, bold lettering that dog licenses will NOT be issued without proof of unexpired rabies vaccination. I am revising the dog license form for this year. In addition to the rabies vaccination expiration date, we will be collecting the name of the Vet Clinic, rabies manufacturer and serial number. You can either fill in this information on the dog license form or it can be left blank IF you send along a copy of the rabies certificate. There will be no exceptions. All dog licenses are due by April 1st of each year. There is a \$5.00 late fee per dog for payments received after that date.

### TREASURER'S HOURS

I am planning to continue flexible office hours at the town hall. I am usually in the office at least two mornings each week. The days of the week vary. I also work out of my home office as needed. If you need to get in touch with me or would like to schedule an in-person meeting, please feel free to leave a message at the town hall. The number is (715)-524-2690. I will get back to you as soon as possible







# THE IMPORTANCE OF RECYCLING By Ann Bartz

**R**ecycling is important in today's world if we want to leave this planet for future generations. It is good for the environment.

Recycling begins at home. If you are not throwing away any of your old products, and instead utilizing it for something new, you are recycling.

The ever-growing population needs space to live and also to grow what they eat by means of agriculture. If all the space were to be taken up by dumpsters and landfills, the survival of humankind on this planet would be really difficult. Recycling solves this problem because with recycling a lesser number of wastes is dumped and some valuable space is saved. We all need to do our best for future generations. This will help your township save money on garbage costs. Please, if you live on a road that has garbage pickup, please use it. If you need cans, please call the Clerk at 715 524 2690. If you are using garbage pickup remember to not put your recyclables in plastic bags, the town gets charged extra if you do because those recyclables cannot go through the process because of the bags.

## RECYCLING GUIDE PLASTIC

<b>ACCEPT:</b>	<b>DO NOT ACCEPT:</b>
Plastic Bottles & Containers	NO Plastic Bags, Wrap or Film
Soda, Water & Other Drink Bottles	NO Motor Oil Bottles
Food & Household Bottles, Jars & Jugs	NO Styrofoam
Dairy Containers & Lids	
Produce, Bakery & Deli Containers	

**GUIDELINES:** Empty & rinse all bottles and containers. Remove and discard all screw caps.

## PAPER

<b>ACCEPT:</b>	<b>DO NOT ACCEPT:</b>
Newspaper & Insert	NO Paper Contaminates by Food or Grease
Cardboard & Paperboard	NO Tissue
Junk Mail & Office Paper	NO Gift Wrap
Milk, Juice & Soup Cartons	
Phone Books, Books, Magazines & Catalogs	

**GUIDELINES:** Flatten and cut cardboard to no larger than 2' x 2'. Place shredded paper in paper bag, secure and label.

## METAL & GLASS

<b>ACCEPT:</b>	<b>DO NOT ACCEPT:</b>
Aluminum Bottles & Cans	NO Aluminum Pans or Foil
Steel, Tin & Bi-Metal Cans	NO Empty Paint Cans
Empty Aerosol Cans	
Food & Beverage Bottles & Jars	

**GUIDELINES:** Empty & rinse all bottles and containers. Remove and discard all screw caps.



## BELLE PLAINE OFFICIALS

- Alvin Bartz, Chairman
- Wade Wisnefske, Supervisor #1
- Cody Hoffman, Supervisor #2
- Kristine Vomastic, Clerk
- Colleen Weishoff, Treasurer

## CLERK'S HOURS

Tuesday & Thursday 9am to 3pm  
 Saturday 8:30am to 11:00am  
 2nd Monday of the month 5pm to 7pm  
 Or by appointment

## REGULAR TOWN BOARD MEETINGS:

2nd Monday of the month at 7pm

## COMMITTEES:

- Planning
- Zoning
- Gibson Island Stewardship

POPULATION ESTIMATE: 1785



Belle Plaine  
 Community  
 Center  
 N3002  
 St. Hwy 22  
 Clintonville,  
 WI 54929

715-524-2690





## CLOVERLEAF LAKES PROTECTIVE ASSOCIATION

**C**loverleaf Lakes Protective Association and almost all the residents of the lakes would like to thank the many volunteers who helped with the removal of the beaver dams. It was an amazing effort by many. This effort lowered our lakes by about 8 inches. This will help preserve homeowners' shorelines and the Gibson Island shoreline. Also, many people's sump pumps may get a little rest. This will probably have to be an ongoing effort and more volunteers will be needed in the future.

This is shaping up to be another fun summer on our lakes with many kayaks, paddleboards, skiers and fishing boats on the water and people just relaxing on the docks, swimming, or taking a slow joy ride on a pontoon boat. Please let us all be respectful and considerate to others so we can all enjoy our little bit of paradise.

Most by now have seen the loons and eagles with their young around the lakes. Please view and enjoy them from a distance. In addition, if you see the dive pontoon boat on the water harvesting the invasive milfoil please stay far away. If you have questions for them, wait until they are on shore and they will be more than happy to answer any questions you may have.

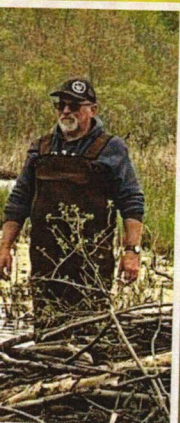
Your CLPA Board of Directors are:

- Gary Schumacher - President
- Kevin Goodman - Vice President
- Jessica Meier - Treasurer
- Jeff Casperson - Secretary

Other board members are:

- Chris Sampson, Andy Hines, and Peter Jensema.









## BELLE PLAINE SPORTSMANS CLUB NEWS

APRIL 28TH

Hwy Y Ditch pick-up, 12 participants and 14 bags of trash  
Sponsoring donation to the Clintonville Trap Club  
The Club continuous to monitor the Walleye Management Plan

### FAMILY TROUT FISH

June 3, 88 kids and plenty of fish caught!!  
Boston Hartlaben, Age 10 caught the biggest fish - 17 ¼ inches!!

### UPCOMING EVENTS:

#### EMBARRASS FUN DAZE

We love to help the fire department with their special day, July 29th

#### HORSESHOE AND BEAN BAG TOURNAMENT

August 19 @ Jessi's Break Away, with food and refreshments!

#### CLOVERFEST 20TH ANNIVERSARY WALK / RUN

Date TBD

#### LEARN TO PHEASANT HUNT

October TBD (kids and adults welcome)



*Belle Plaine 4-H Cleaning up at Sandy Beach located on the Cloverleaf Lakes.*

If you would like to join Belle Plaine 4-H the contact number for the extension office is 715-526-6136. Meetings are the 3rd Sunday of the month at 6pm at the Belle Plaine Community Center located at N3002 State Highway 22 Clintonville, WI 54929. Kindergarten thru 1 year after senior year are eligible.



## THANK YOU FROM GIBSON ISLAND BY JOY KRUBSACK

Since the purchase of Gibson Island, people have often quietly donated to its care. This thought may have been sparked by a need such as native plants, a recognition gift like a graduation or award or a special memorial.

These gifts continue to arrive and we want you to know they are appreciated and used. Please note that Gibson Island doesn't post markers for these individuals because the conservative goals are to remain as natural as possible. However, donors continue to see the value for the island's care.

Currently, we have decided to recognize these special gifts with you as readers of our Town of Belle Plaine newsletter.

Since the beginning of 2022, Gibson Island has received donations:

Dennis and Joy Krubsack in memory of Dick Thurow

Christopher and Lori Cichy

Dennis and Jan Thornton for the purchase of new plants



# OUR PLANNING FOR YOUR 2023 FIREWORKS CONTINUES!

## FROM THE TEAM AT CLOVERLEAF LAKES FIREWORKS INC.

**J**uly 1st is just around the corner, and so are your 2023 Fireworks! As we build up for this 2023 season, we thank you for your continued support and input! We received several entries for the boat parade theme and the winner is: VINTAGE COMMERCIALS! Details are live now on our website, including pre-registration and prizes.

The Spring Fundraiser apparel sale is coming up May 1 through May 31st. Keep an eye out on social media, as well as your doors for the order form, featuring our BRAND-NEW LOGO! This year's sale we have an exciting selection of shirts and accessories for both the Cloverleaf Lakes and Long Lake

The search is on for the 2023 King or Queen of the Lakes! Contestants will compete for the collection of the most donations, and the winner will be crowned the King or Queen and receive a prize basket, community event involvement opportunities, and bragging rights. Apply now on our website!

Get involved with the fireworks! Our rocket located across from the boat landing on County Road Y continues to show our progress for the 2023 season. Our Memorial opening shots for this year's show will be presented by our grateful community to honor both Warren Hansen who paid the ultimate price in November of 2003 and Jim Karlson who we lost in August of 2022. Please join us in celebrating the faithful service of these two men. If you are a local business (in exchange for advertising opportunities) or an individual looking to support this community event, visit [CloverleafLakesfireworks.com](http://CloverleafLakesfireworks.com) to donate online, mail to Cloverleaf Lakes Fireworks Inc., P.O. Box 275, Embarrass, WI 54933, or contact us at [CloverleafLakesfireworks@outlook.com](mailto:CloverleafLakesfireworks@outlook.com). We are also in need of equipment updates this year-specifically pontoon decks - more details are online. If you have a passion for the Cloverleaf Lakes and have an interest in joining our team, please visit the "Membership" page on our website!

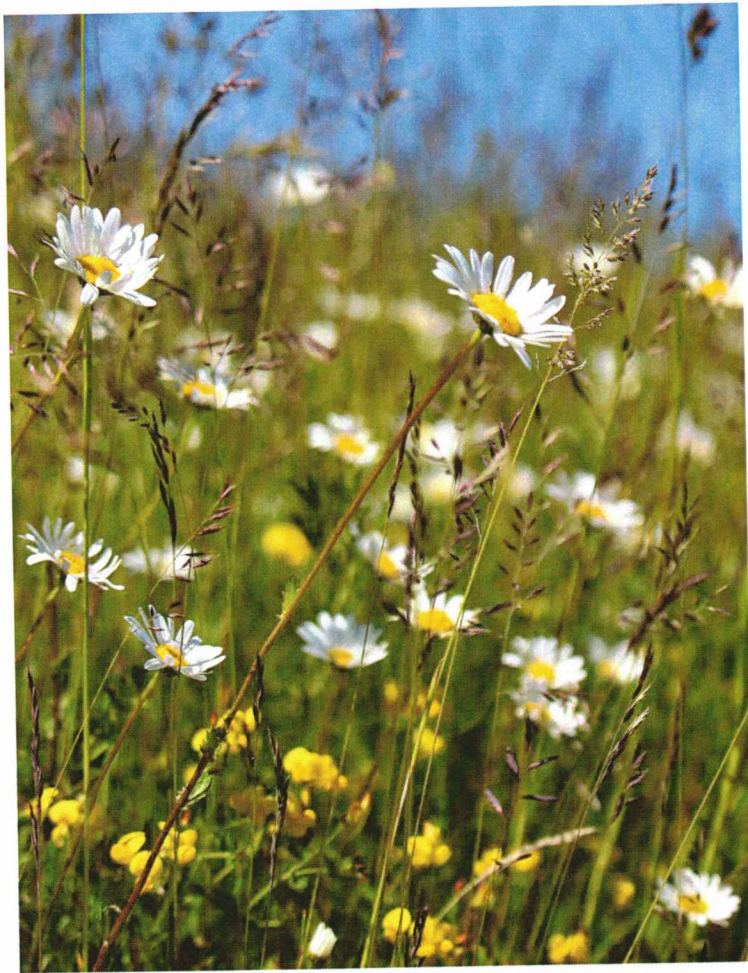
This community holiday event is proving to be a cherished tradition to celebrate, and we couldn't be more thrilled to share our passion and excitement as we prepare for this. Check our donor "spotlight" on the website to read about a few local key contributors! Thank you to all the local families, neighbors, and businesses that continue to support and build upon this celebration.

[CLOVERLEAFLAKESFIREWORKS.COM](http://CLOVERLEAFLAKESFIREWORKS.COM) | [CLOVERLEAFLAKESFIREWORKS@OUTLOOK.COM](mailto:CLOVERLEAFLAKESFIREWORKS@OUTLOOK.COM) | [@CLOVERLEAFLAKESFIREWORKS](https://www.instagram.com/CLOVERLEAFLAKESFIREWORKS)



Presorted  
Standard  
U.S. Postage  
Paid  
Shawano, WI  
Permit No. 135

Belle Plaine Community Center  
N3002 St. Hwy. 22  
Clintonville, WI 54929



**W**olf River Lutheran High School Shawano, has had an exciting year. Enrollment continues to remain steady. Next year the school is looking forward to having double digits in each class pushing enrollment to over 40 students. Students are able to participate in numerous clubs and activities like art and drama club, volleyball and basketball, trap, cross country, and track and field. If a student is interested in a specific activity, Principal Kosmerchock said the school makes it happen and creates a club for students. This allows the students to focus on what interests them. The students are able to participate in the Youth Apprenticeship program, allowing them to work for area businesses while earning credits for high school. Currently, the school has one student in the program, but next year 11 new students have applied to the program.

This will help the school tremendously in being able to provide Tech Ed opportunities for the students.

The school completed a capital improvement this year with the installation of new bleachers in the gymnasium. The project was funded through the generous donations of its supporters. The enjoyment of the bleachers was evident during the boys' basketball season.

There are numerous opportunities for financial assistance for families. Families are welcome to tour the school or check out the school website at [wrlhs.org](http://wrlhs.org). Wolf River Lutheran High School continues to prepare Christian leaders in an ever-changing world.